
Yeovil Western Corridor

April 2017

**Mike O'Dowd-Jones: Strategic
Commissioning Manager Highways
and Transport**

WWW.SOMERSET.GOV.UK

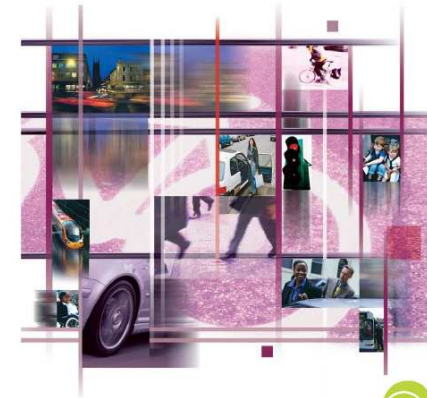


Background

- Yeovil Community Review of Transport 2001/02
- Yeovil Urban Development Framework (SSDC Sept 2005)
- Yeovil Transport Strategy Review (Nov 2005)
- Yeovil Western Corridor Study (April 2006)
- Yeovil Eastern Corridor Study (June 2007)
- Strategy Baseline Review (2012)

Somerset County Council
Environment Directorate

Let's make a difference



Local Transport Plan **2006-2011**

Yeovil Transport Strategy Review

WWW.SOMERSET.GOV.UK



Background

Yeovil Transport Strategy Review (Nov 2005)

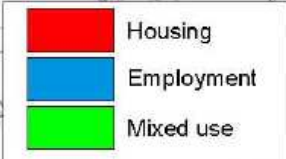
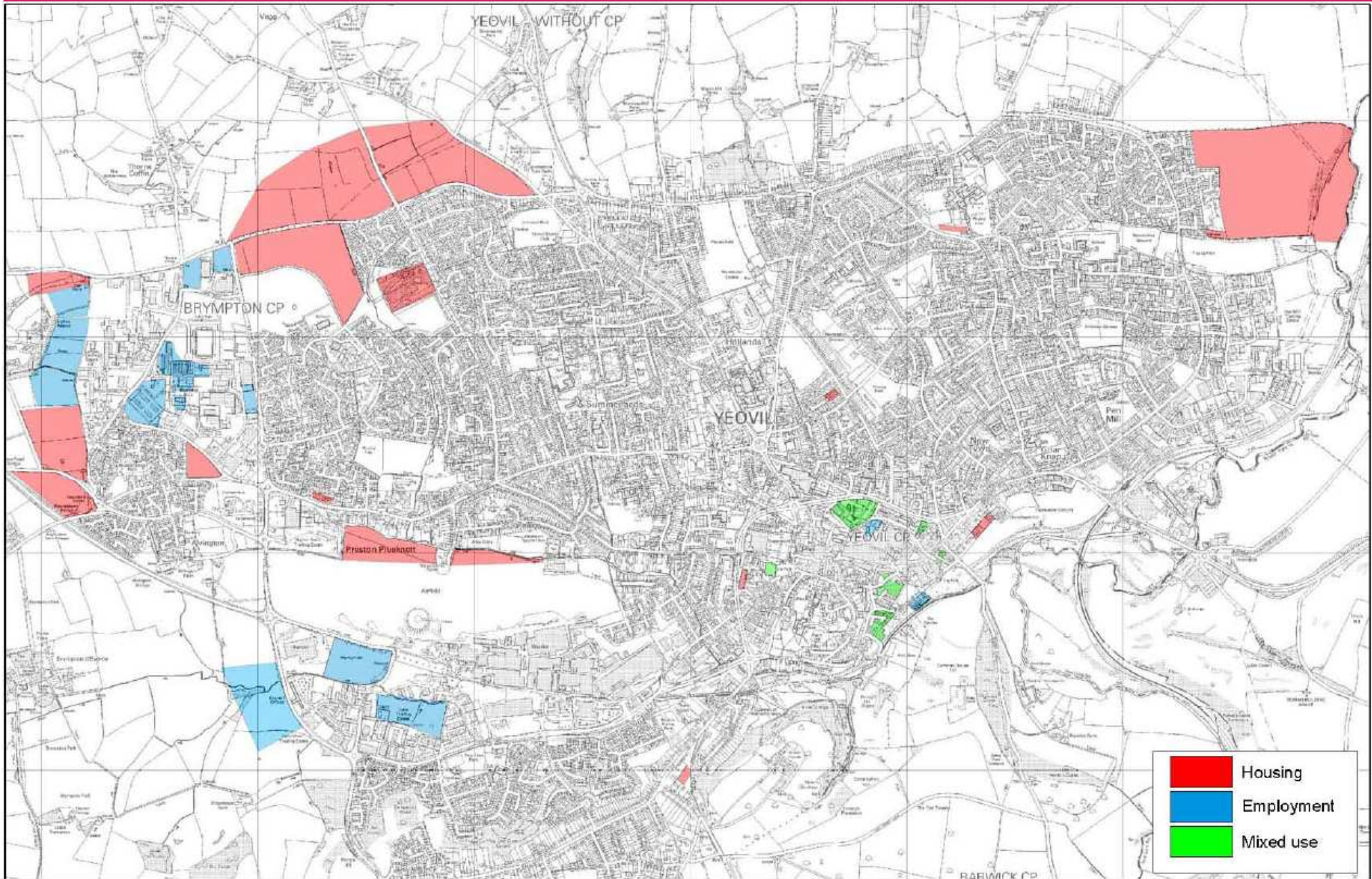
- Assessed the traffic impact of planned development to 2011
- Identified likely levels of traffic congestion
- Assessed feasibility and deliverability of proposals to reduce the rate and impact of traffic growth and accommodate planned development
- Assess options for freight routing, road infrastructure, public transport, walking and cycling, off street parking and traffic management
- Tested feasibility of park and ride and new road links
- Identified likely increase in congestion and delay at congestion hot spots on the Eastern and Western Corridors.
- Set out a transport strategy and proposed priorities for an implementation programme.
- Informed development plans and funding bids.



Local Transport Plan **2006-2011**

WWW.SOMERSET.GOV.UK





ATKINS

Yeovil Transport Strategy Review
Figure A.1 - New development zones within Yeovil up to 2011

Reproduced from Ordnance Survey mapping with the permission of Her Majesty's Stationery Office under License No. LA070583. © Crown Copyright. Reproduced with the permission of the Controller of Her Majesty's Stationery Office. Unauthorised reproduction infringes Crown Copyright and may lead to prosecution or civil proceedings.

Background

Yeovil Western Corridor Study (Apr 2006)

Strategic Transportation Appraisal

- Assessed the impact of future growth in traffic on the Western Corridor.
- Traffic forecasting and modelling.
- Operational assessment to develop the form of junction improvements to accommodate 2011 traffic forecasts including planned development.
- Testing outline design options.
- Identified proposals to encourage short distance trips by walking and cycling.
- Initial cost estimate for works.
- Informed planning applications and developer funding agreements for Lufton and Brimsmore Developments.
- Improvements required in order to accommodate the planned developments.

WWW.SOMERSET.GOV.UK



Background

Strategy Baseline Review (2012)

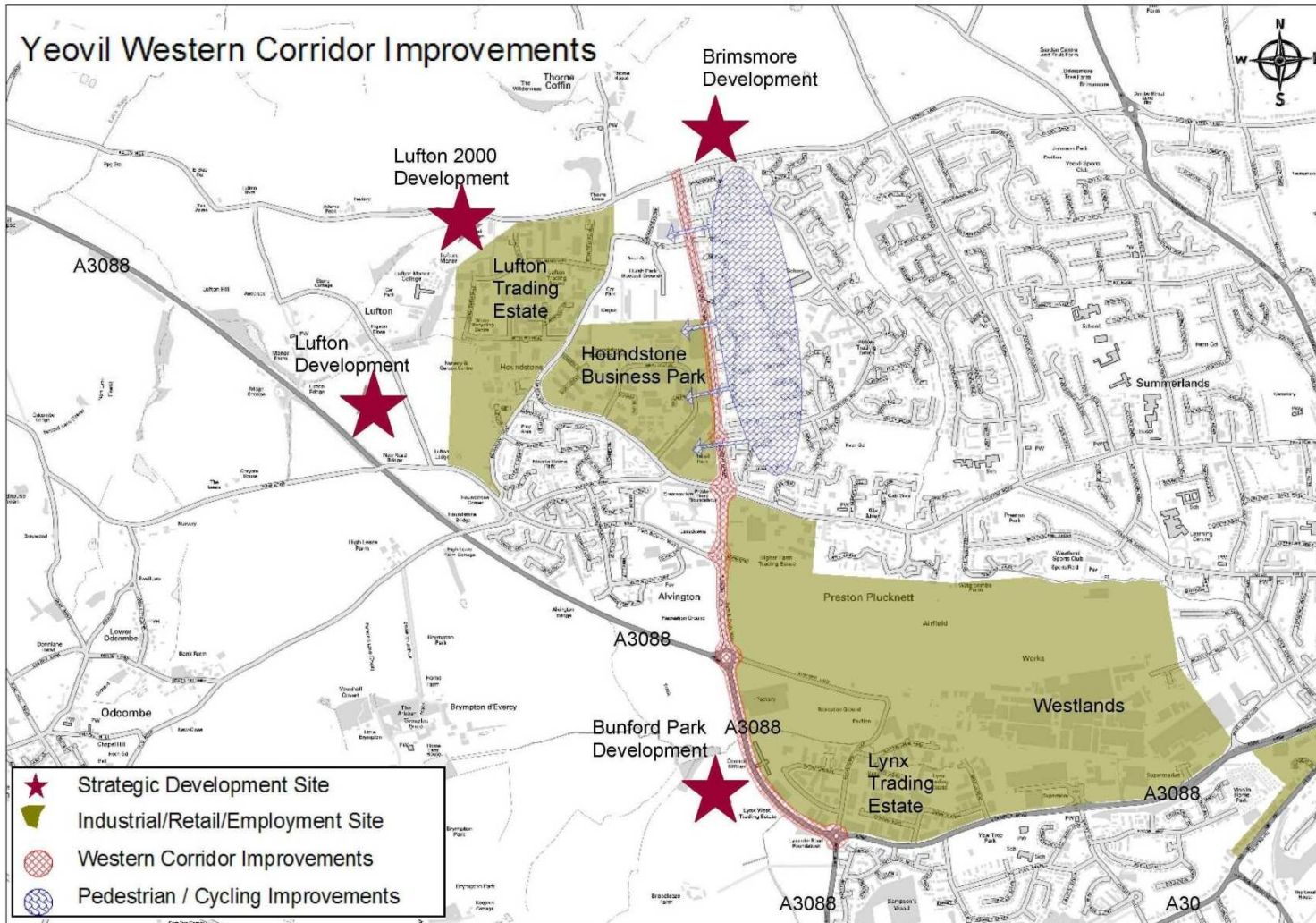
- Updated the traffic model to inform local plan processes and detailed corridor improvement scheme designs (forecasts to 2028).
- Reviewed stakeholder transport issues
- Councillor workshop – Dec 2012
- Employer Workshop – Nov 2012
- Town Centre Workshop – Nov 2012
- Reiterated concerns about traffic and impact of Lufton and Brimsmore Development.
- Reiterated need for corridor improvements.
- **Top priorities** – Better access to the town centre, addressing traffic congestion, reducing severance, parking improvements, bus improvements, access to the hospital, road safety.

WWW.SOMERSET.GOV.UK



Yeovil Western Corridor

Scheme Recap



- Brimsmore 830 dwellings
- Lufton 717 dwellings
- Bunford 16 ha. B1 employment
- Lufton 4.5 ha. B1 employment

WWW.SOMERSET.GOV.UK



Scheme Development and Progress

- Principles set out in 2006 study leading to £4.58m developer contributions.
- Scheme included in Local Enterprise Partnership growth programme July 2013 following competitive process.
- Initial design work undertaken.
- Consultation with local elected members January 2014.
- Outline business case submitted April 2014.
- Public exhibitions 12-16 May 2014.
- Outline business case approved by LEP July 2014. In-principle agreement to £6.49m contribution.
- Ongoing communication with Yeovil Town Council; Chamber of Commerce and Yeovil Vision Board.
- Detailed design & Procurement completed.
- Advance works – utility diversions completed.
- Land acquisition being finalised.

WWW.SOMERSET.GOV.UK



Scheme Benefits

- Enables development of 1547 homes and 20.5 ha employment supporting economic growth in the area
- Increases capacity of the road to carry traffic and reduces delay to traffic
- Reduces forecast levels of congestion once developments are in place: (AM rush hour journey time reduced by up to 36% in 2028, and PM rush hour journey time reduced by up to 27%)
- Economic benefit through reduced journey times equivalent to £123m
- Economic benefit of reduced road accidents equivalent to £1.384m
- Improved facilities for pedestrians and cyclists with associated health benefits - physical fitness through physical activity.

WWW.SOMERSET.GOV.UK



Contract Benefits

- Strong Stakeholder Engagement Plan:
- Communications and customer care plan
- Public liaison officer
- Pre-start meetings with affected residents, landowners and businesses
- Monthly project newsletter
- Project information centre
- Web page and social media management
- Media liaison
- Careful planning around events such as football fixtures to minimise disruption

WWW.SOMERSET.GOV.UK



Target programme

- Advance works to divert water utilities April/ May 2017.
- Decision to award contract – April 2017.
- Contract award - May 2017.
- Mobilisation – June 2017
- Commence construction – June 2017
- Estimated completion - November 2018

WWW.SOMERSET.GOV.UK



Copse Road Junction



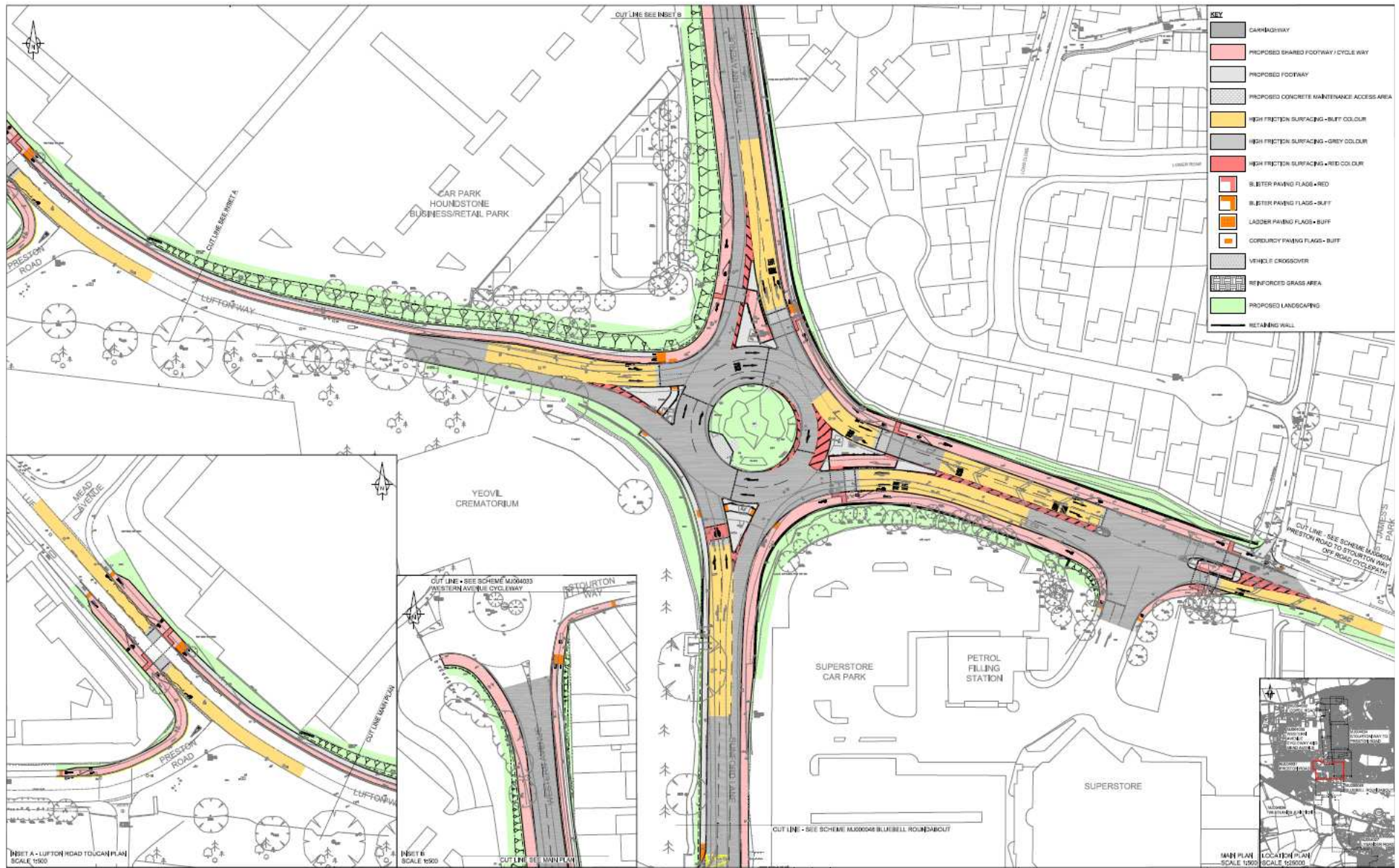
WWW.SOMERSET.GOV.UK



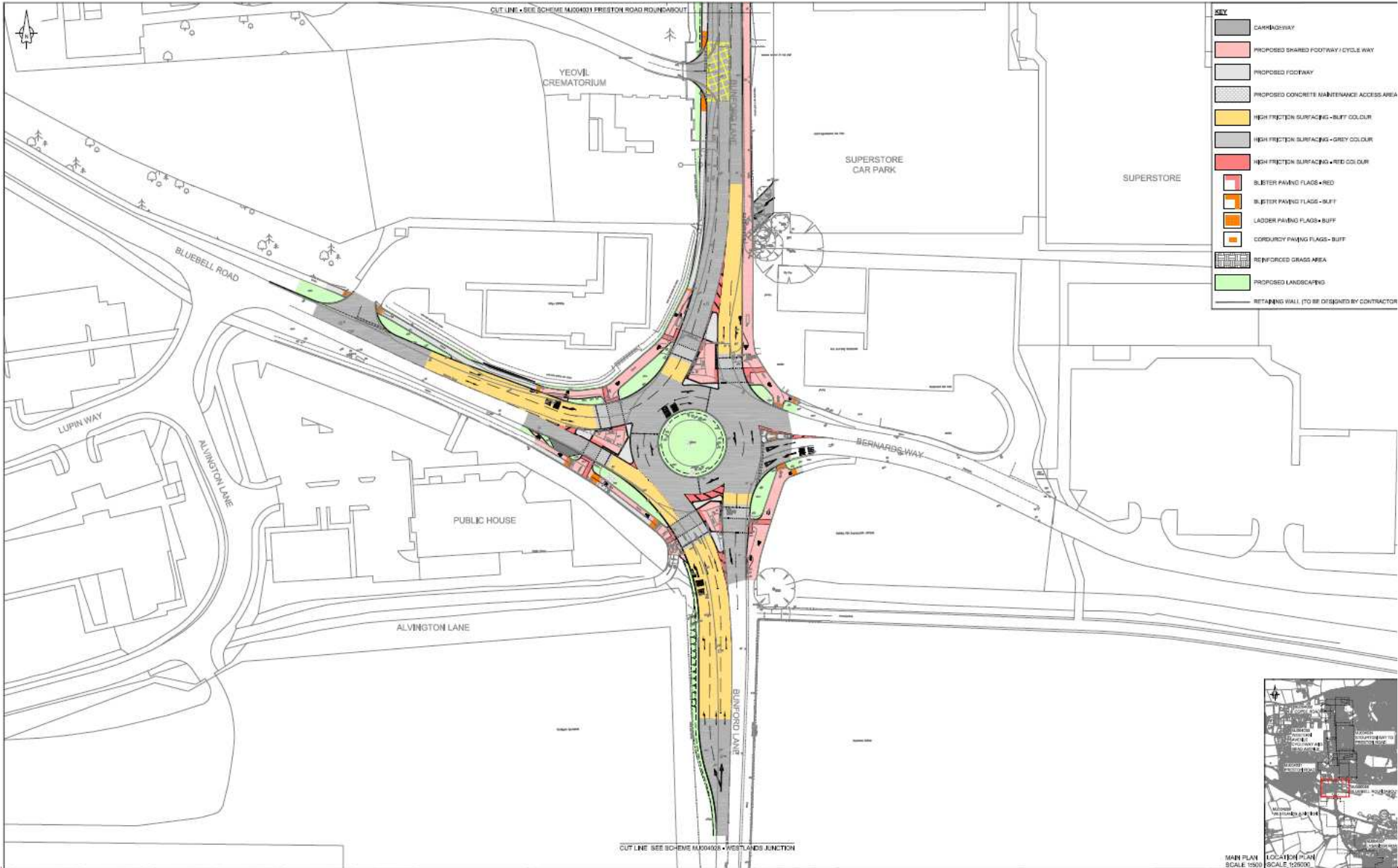
Western Avenue Cycleway



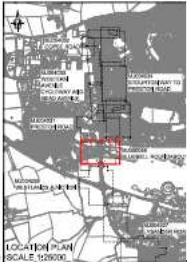
Preston Road Junction Signal Roundabout



Bluebell Junction Signal Roundabout

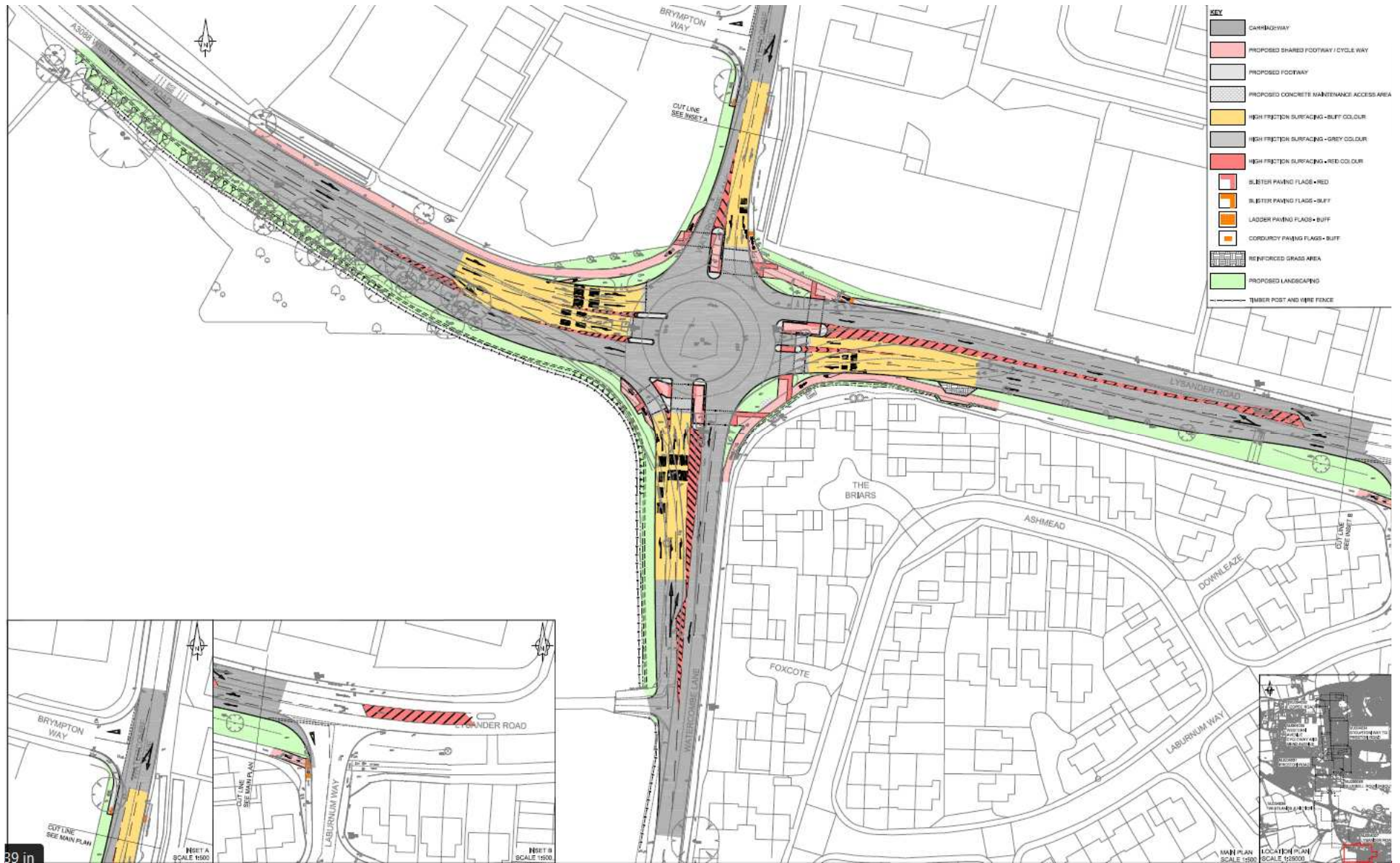


KEY	
[Grey Box]	CARRIAGEWAY
[Pink Box]	PROPOSED SHARED FOOTWAY / CYCLE WAY
[Light Grey Box]	PROPOSED FOOTWAY
[Dotted Box]	PROPOSED CONCRETE MAINTENANCE ACCESS AREA
[Yellow Box]	HIGH FRICTION SURFACING - BUFF COLOUR
[Light Grey Box]	HIGH FRICTION SURFACING - GREY COLOUR
[Red Box]	HIGH FRICTION SURFACING - RED COLOUR
[Red Box with White Center]	BLISTER PAVING FLAGS - RED
[Orange Box with White Center]	BLISTER PAVING FLAGS - BUFF
[Orange Box with White Center]	LADDER PAVING FLAGS - BUFF
[Orange Box with White Center]	CORDUROY PAVING FLAGS - BUFF
[Green Box with Grid Pattern]	REINFORCED GRASS AREA
[Green Box]	PROPOSED LANDSCAPING
[Line]	RETAINING WALL (TO BE DESIGNED BY CONTRACTOR)



MAIN PLAN SCALE 1:500
 LOCATION PLAN SCALE 1:25000

Lysander Road/ Watercombe Lane Signal Junction



Preston Road to Stourton Way Footpath/ Cycleway (1 of 3)



Preston Road to Stourton Way Footpath/ Cycleway (2 of 3)



Preston Road to Stourton Way Footpath/ Cycleway (3 of 3)

